



L.T.T.C. NEWS



July 2011 Issue 6

Learning Tree Therapy Centre



- ✚ Update on Trainings
- ✚ Rooms for lease
- ✚ Career Opportunity
- ✚ Parent Group
- ✚ Professional mentoring group
- ✚ LEAP Program
- ✚ Floortime Playgroup
- ✚ Other Notices
- ✚ The Action Is In The Interaction Parent Training

Greetings to Parents and Colleagues,

Time to update on our activities and upcoming programs within our Learning Tree and Sensory Connections teams. We have had a fabulous year so far, very busy but we have achieved much and it is very rewarding to see many great ideas being now realised. We are fortunate to have a wonderful team all of whom are passionate about supporting the development of the children and families we are fortunate enough to be working with. We are continuing to provide a range of individual and group therapy term based programs at rooms in Shenton Park and Nedlands. Our holiday groups programs both during January and during July at Shenton Park were very successful with great feedback received by parents.

We are thrilled to have such a range and depth of experience in our dream team. Our whole team meets regularly to discuss casework through video analysis and reflection of our work, and each member is engaged in their own individualized mentoring and professional development goals so that we can continue to be innovative and provide a high quality of service.

In term 2 we started a Wednesday Floortime playgroup and this will be continuing during term 3 on a weekly basis and we are planning to start another on a Monday morning.

The next six months are also looking also very BUSY ! with continuation of current programs and introduction of new programs. We are all very excited about starting the LEAP preparatory group program of which Anne will be directing, there are upcoming Parent Training Days , and more on the horizon... We look forward to meeting and liaising with you and hope you enjoy this update!

Kathy Walmsley and Anne Nunn, Directors of LTTC

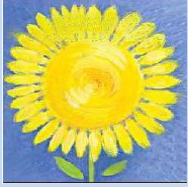


TRAINING UPDATES By Kathy

In February and March this year alongside with my Speech and language therapy colleague from Ireland, Mari Caulfield, I presented Three Day DIR training workshops in Sydney and in Perth. In Sydney we also presented a day for parents at the Northcott Centre, and in Perth a weekend professional mentoring intensive. All of the trainings were well received and I really enjoyed getting out and about and meeting new and old friends and colleagues.

104 Keightley Road West, Shenton Park, WA. 6008 +61 (8) 9382 8538

www.sensoryconnections.com.au

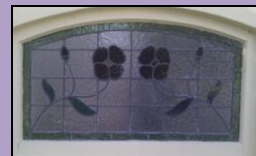


Lucky me! I had the opportunity to return to Ireland In May for a flying visit to work again with Mari where we presented a 3 day Professional DIR workshop and also ran a weekend Professional mentoring intensive. Our Perth weekend mentoring was a real gathering with participants coming from four different states of Australia and we used a similar format in Galway at Mari's castle where she works. Our Galway group consisted of 9 participants from all disciplines from five different countries. It was such a privilege to participate in gathering together in such a beautiful environment.

Upon my return from Ireland I was again fortunate enough to be invited to go to Geraldton by an organization called Aidan's Place to run a workshop for a parent and professional group. I really loved meeting the parents and professionals living and working in rural and remote regions. There are so many additional and different challenges faced by parents outside of the metropolitan area however I was struck by the strong sense of community that is being well nurtured by the Aidan's Place team.

Other training news is related to my own professional development! Earlier this year I was granted a scholarship with the Graduate School program with the Interdisciplinary Council of Development and Learning. I will be commencing on a part time basis in September working towards attaining a Doctorate PhD in Infant and Early Childhood Mental Health and Developmental Disorders. The course content is so relevant to our work with children and families ... I am excited about being able to immediately use what I learn.

**Rooms
For
Lease in
Shenton Park**



Fantastic Central Location and Attractive Environment This facility includes consulting rooms approximately 28 square metres and therapy gym's 40 and 80 squares. Use of kitchen and reception areas included. Internet Access and fully furnished. Available for part and/or full day hire, short or long term. Suitable for Child Psychology, SLP, OT and other allied health and Early Education providers.

Inquiries contact: administration@sensoryconnections.com.au or contact 0424 288 779

**OT Career
Opportunity**



We are seeking experienced paediatric occupational therapists to join our dynamic team as contractors. Suitable for therapists who are seeking a flexible working environment and can work a minimal of 2 days per week.

Therapists seeking a return to the workforce after parental leave are encouraged to apply.

Extraordinary professional developmental opportunities are available. Please email your interest along with your resume to Kathy Walmsley at kwalmsley@sensoryconnections.com.au

Part Time
Administrator /
Reception

We are seeking an *Admin Assistant / Receptionist* to Job Share with Lynda **Contact:** administration@sensoryconnections.com.au

LTTC and Sensory Connections FT Parent Group

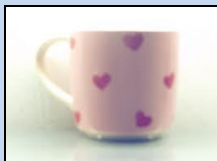
This group has been continuing to meet over the last six months. The last events was a barbecue and picnic at a park in Subiaco, and a parent meeting in our Shenton premises. This was a really supportive and informative experience for those who braved the wintery weather and came along.

Upcoming Events that should not be missed are a Family get together at the PCYC @ 450 Rokeby Rd Subiaco on Sunday the 14th of August from 9.30am.

There is a huge gymnasium with tumbling mats, climbing equipment & trampolines. There is also a pool table & air hockey for older kids. PCYC has kindly waived the fees for our group! It is a great venue for our needs so we hope you can all make it.

PARENT EVENING GET TOGETHER: Wednesday 9th October Parent Meeting Doors open 7.30pm, meeting from 8.00 to 9.30pm. gold coin donation for utilities cost. Kathy and Anne will be attending and available during the discussion.

RSVP Linda Payne, Volunteer Parent Group Organiser at linda_payne@iinet.net.au if you would like to come along to either of these activities and/or join the email list for the parent group and be sent out notices and reminders



KIDS NEWS SPOT



Congratulations to James who has been voted class captain!!

Floortimers Australia List serve For Networking, Support & Resource Information

This is an egroups Listserve and discussion groups for parents & professionals.

The goal is to provide an opportunity for sharing information and resources.

The link to this group is <http://au.groups.yahoo.com/group/floortimersaus/>

Please follow this link to join

2011 DIR® International Mentoring Group for Professionals Conference Call Small Group:

Five 1 ½ hour Sessions: August 2011 to February 2012

Held on a late Monday afternoon Perth time, 9.00am GMT for professionals who have completed Introductory DIR® Training and who are integrating this approach into their practice.



AUSTRALIAN MADE



“ I thought that the multidisciplinary aspect of the group mentoring was fantastic.. The mentors and the other group members all provided a wonderful variety of suggestions which have helped enormously. “
 Speech Pathologist from Ireland

Please contact Kathy on kwalmsley@sensoryconnections.com.au or mari at speech@maricaulfield.com if you would like to be sent a flier for this group with more details/ THIS IS ALMOST FULL SO PLEASE INQUIRY ASAP. We are also taking booking / interest for the following group starting early 2011.

2011 SENSORY CONNECTIONS AND LEARNING TREE EVENTS

LEAP Program



LEARN AND ENGAGE through PLAY

Early Intervention Intensive Program

This will be a Developmentally and Relationship based early intervention group program with a primary focus on supporting the child’s social emotional , language, cognitive and motor development through the use of both Floortime and semi structured tools appropriate to the profile of each individual child.

This is preparatory program is currently running 2 hours on a Tuesday and Thursday morning. It is staffed by therapists will be Anne Nunn, SLP / Director, and Sharon Campbell, OT & Physiotherapist and trained support workers. The program is currently full however there will be space for more children further on in the term and we are taking a waiting list for next term. Please contact Anne Nunn at anne.nunn@optusnet.com.au if you would like further information and/or to be sent a flier.



This playgroup is for families accessing services in our practice. The supportive environment is a space where parents can have the opportunity to play and interact with their children working on their therapy goals in the company of other parents including other skilled volunteers.

The play is facilitated by professional staff and runs on Wednesdays from 1.30 to 2.30 pm. Another group is planned to start on Mondays 10.30 to 11.30am sometime later this term (Places available)

Please talk to your therapist for more information about the playgroups.

Floortime Support Playgroup



Saturday 3rd & 17th
September

Please register ASAP
as places are strictly
limited to small
group size.

This will be the last
Parent training
workshop for 2011

The Action Is In The Interaction

DIR/Floortime Training for Parents - 2 day workshop in Perth.

Trainers: Kathy Walmsley along with Anne Nunn, SLP and other members of the LTTC group.

This workshop will be held over two Saturdays and will offer practical training and support for parents. We have been running Parent training programs now for eight years and have found a positive correlation in terms of the progress made by the children and parent's participation in the parent training program! Parents however do not have to be accessing services to be able to register, we particularly encourage parents with children on our wait list to register.

See Flier at the back of this newsletter for full details

ARE YOU INTERESTED ???

Do send us a quick email at administration@sensoryconnections.com.au or mention to your therapist if you would be interested in any of these programs for your children,

- Saturday Sibling Floortime Groups - facilitated by our skilled support worker Felicity and other helpers.
- Saturday Motor Skills Practice Program for Children - Mitchell who is sports science trained may be available to offer programming for children on a Saturday. (Some kids may have met Mitchell during the holiday groups)
- Baby Sibs Facilitated Playgroup - Do you have a younger baby ? Need a place to get some support from other parents in the same situation and also an opportunity to give your little one some extra input. This play group would be for parents with infant/toddler siblings to meet while the older kids are at school /intervention programs. Let Kathy know if this is of interest to you.

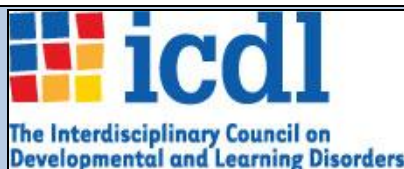
OTHER NOTICES

Sensory Connections Proposed 2012 Trainings for Professionals

2012 February - March Workshops and Training with Barbara Kalmanson, Clinical Psychologist, and Special Educator, Dean of ICDL Graduate School . (Dates and Location to be confirmed by end of September 2011.

2012 June - August -DIR Regional Workshops with Mari Caulfield, SLP and Kathy Walmsley, OT. Location: To Be Advised

STAY TUNED FURTHER NOTICE WILL BE PROVIDED ABOUT THESE EVENTS



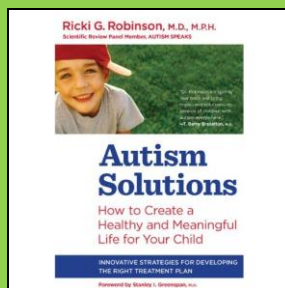
ICDL November Conference and Regional Institute www.icdl.com

November 11 - 13 2011 , Bethesda, Maryland, USA. Online version is likely for international post conference as in past years so stay tuned for news of this.



Profectum Foundation is a newly created non-profit foundation dedicated to advancing development for individuals with special needs and families. Training on September 25th 2011 in New York. The morning Plenary Sessions will feature acclaimed leaders in the autism treatment community, including Serena Wieder, PhD (coauthored and with Stanley Greenspan, MD) and Ricki Robinson, MD MPH (author of Autism Solutions). Fourteen Workshops in the afternoon will feature a variety of introductory and advanced topics geared for parents and professionals, featuring nationally and internationally known clinicians and educators. This training will be available on webcast!
<http://www.regonline.com/builder/site/Default.aspx?EventID=997945>

Book Recommendation



AUTISM SOLUTIONS gives parents a greater understanding of their child's unique learning, sensory and medical profile. Recognizing that no parent can do this alone, Dr. Ricki Robinson the author, shares innovative strategies for developing the right treatment plan, serving as a beacon of hope and help for children and families affected by autism. This book, written by a doctor who works within a DIR framework is one of the first books we are now recommending for parents of children with Autism Spectrum Disorders accessing services with us (alongside with Engaging Autism by Dr Stanley Greenspan.) It is an excellent, compassionate and incredibly resourceful book for parents and professionals - it is a guide book that parents will be referring back to time and time again for practical information and covers from pre diagnosis right through to adolescence & adulthood.
<http://www.drnickirobinson.com/>



Sensory Connections & The Learning Tree Therapy Centre Present

"The Action Is In The Interaction "

A Small Group Workshop for Parents

For those who are parenting children with challenges in relating, communicating and learning, including autism, developmental and sensory processing disorders.

Trainer: Kathy Walmsley, OT, DIR® Trainer, Assisted by SCOTS & LTTC Staff

When: Saturday September 3rd and Saturday September 17th, 2011

Time: 9.00 to 4.30pm

Venue: 104 Keightley Road West, Shenton Park, 6008

Costs: \$490. (Note: Eligible parents can use FaHSCIA HCWA EI funding, discounts available for when both parents attend, funding support may be available – please inquire with us.)

Payment includes: Course Handbook & training materials, Light Lunch, Morning and Afternoon refreshments.

Explore relationship and developmentally based ways of helping your child through your interactions during play, daily routines & activities

- **Calm and attend and emotionally engage with caregivers and peers**
- **Build communication and language**
- **Build motor planning and problem solving capacities**
- **Support the development of thinking & reasoning**
- **Learn to express ideas & feelings**

Parents will learn about:

- **The evidence base that informs us about the importance of child caregiver interactions – how to harness your relationship with your child to support their development.**
- **The stages of healthy social emotional development**
- **Ways that sensory processing dysfunction can impact on development**
- **How language develops and how to support your child's range of communicative functions**
- **Ideas for managing daily challenges**
- **Ways to support your family functioning**

104 Keightley Road West, Shenton Park, WA. 6008 +61 (8) 9382 8538

www.sensoryconnections.com.au

Feedback from Parents from our 2010 Parent Trainings

“As a parent of a child with an ASD I think it is very important to consider a number of approaches in their intervention. I strongly recommend this workshop to other parents. The DIR model provided me with a whole new way of looking at my children. Kathy, Sharon and Anne have an enormous amount of experience and generate such positive energy and warmth as they take you through the components of Stanley Greenspan’s model and the Floortime approach. The power points, workbooks, resources and video clips were first class. Best of all it was uplifting to see the gains these kids are making in their abilities to engage relate and learn.”

“Fantastic! The information I learned was invaluable and will definitely help in a major way. You could really tell that these parents were going through similar experiences to our own and it was nice to share. I learned a lot more about how we constantly move through the levels and the whole event really perked my husband and I up, we feel ready to do more with our child. “

“Very helpful to see other parents in the video clips working with their children at the developmental levels and to learn about the different profiles and sensory tips. It has helped me to see that I can use Floortime strategies anytime throughout the day and not just during play times. It has really helped me as a parent to learn more about how I can help my child”

Sensory Connections and LTTC DIR Parent Training Program

Registration Form/Tax Invoice (Please keep copy for your records)

Dates of Parent Training: Saturday 3rd and 17 Septemberth 9.00 to 4.30pm

Parent Name 1: _____ Parent Name 2: _____

Child’s Name & DOB: _____

Address: _____ Postcode: _____

Phone Home: _____ Work/Mobile: _____

Email: _____

Therapist Name: _____ (If child /family are accessing services with us) Referred By: _____

Please note: Primary caregiver attendees may be eligible for Respite Assistance while attending training. Enquire from your local Area Co-ordinator, Respite Centre. Tel. 1800 059 059 Cost: _____ @ \$490 / person Full Payment is required to reserve your place. No refunds are available after August 29th. \$50 admin fee applied for cancellations prior to this date.

I am paying by: Cheque/M.O. EFT Credit Card FaHSCIA

Amount: _____ Credit Card: VISA MasterCard

Acct #: _____ - _____ - _____ - _____

Expiration Date: ____/____/____ Name on Credit card: _____

Direct Funds Transfer (EFT) to: Sensory Connections

BSB: 016141 Account #:251852996

Please include your **Name** and **Training Location** as a Reference in your EFT transfer.

Please make cheque payable to: **Sensory Connections OTS Pty Ltd**

104 Keightley Road West, WA 6018. (ABN: 94 108 212 915) Fax to 08 9382 8538 or Mail to Above Address

104 Keightley Road West, Shenton Park, WA. 6008 +61 (8) 9382 8538

www.sensoryconnections.com.au